

尺寸：140x85mm

200克铜板纸 双面印四色 封面封底过哑胶 20P钉本

# **Pico Projector Manual**

Please read this manual carefully before using your projector.

Thank you for choosing this wireless LED Pico Projector. This projector offers 100 ansi lumens with built-in battery and has Android built in and screen mirroring.

The projector offers simple & easy wireless mirroring with most devices including Apple, Android and Windows laptops, games consoles and other devices.

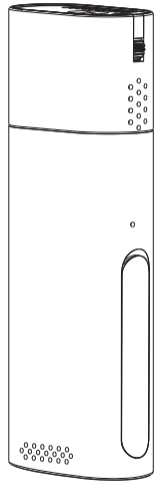
## Safety Instructions

1. Do not look at the lens when the projector is running as the light glare may damage your eyes.
2. The voltage for this product is only in the range of 100V-240V and cannot be adjusted exceed this range.
3. The battery for this product is only internal and must not be tampered with.
4. Do not use your projector in areas with static electricity or where they may come into contact with moisture as it may cause malfunction and damage to the projector. Should keep it away from liquid.
5. Do not block the vents while the projector is turned on especially the vents at the bottom of the device as it may cause overheating, damage or fire.
6. Please store this device at the optimum temperature of 0 to 35 °C or a working temperature of -10 to 35 °C. If you do not intend to use the product for a long time please store it fully charged, and discharge it at least once every 3 months to prevent any reduction in the battery performance.

## Directory

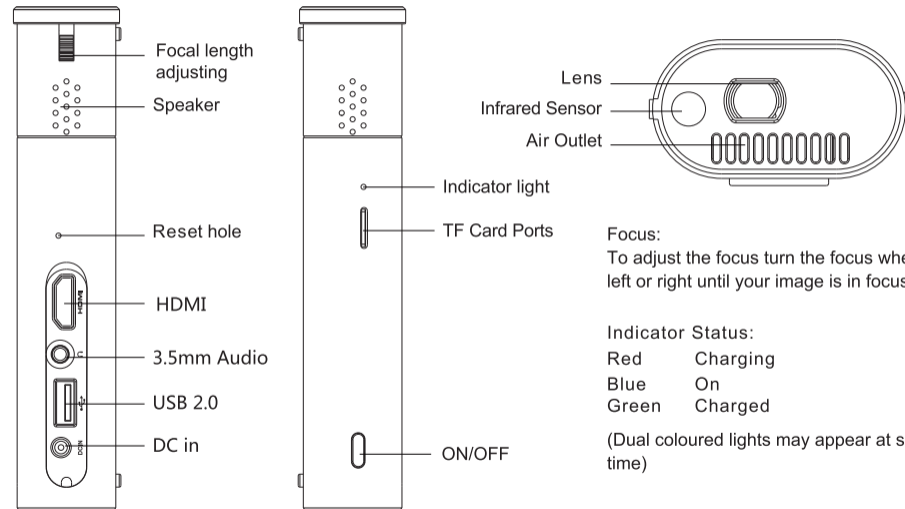
Specification .....	02
Projector Settings .....	03
Remote Control .....	04
WIFI,Bluetooth,Portable Wi-Fi hotspot .....	05
Ethernet,HDMI,Connect with computer .....	06
Factory data reset,APK installation and unloading .....	07
USB driver, HDD, SD card and WORD,EXCEL,PPT .....	08
EShare Instruction for Android .....	09
EShare Instruction for Android .....	10
EShare iPhone instruction .....	11
EShare Instruction for Windows .....	12
iPhone line synchronization with the projector .....	13
PC upgrade instruction .....	14
Whats in the box .....	15
Claim .....	16
Warranty Card .....	17

## Specification



CPU	ARM cortex-a7
RAM	1GB or 2GB
ROM	8G or 16G
Wifi	2.4G/5G
Display Technology	DLP Technology
Lens	High lens head
LED light	RGB
Physical Resolution	WVGA ( 854x480)
Projection Image Size	12-200 Inch
Wireless Mirroring	For IOS / Android / Windows PC / Mac
Adjustment Function	Keystone Correction / Manual Focus
System	Android 7.1
Bluetooth	Bluetooth 4.0 (speaker connection only)
Remote control	Infrared remote control
Speaker	Stereo Speaker, 8Ω1W
Power	AC100~240V, Input 50/60Hz, Output DC5V / 3A
Ports	HDMI/USB 2.0/TF Card/3.5mm Earphone Jack/DC in
Dimensions	146.7*53*30.5mm

## Projector Settings

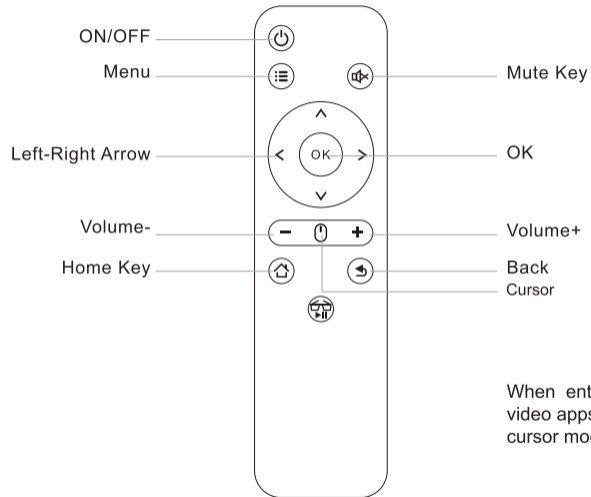


**Focus:**  
To adjust the focus turn the focus wheel left or right until your image is in focus.

**Indicator Status:**  
Red     Charging  
Blue    On  
Green    Charged

(Dual coloured lights may appear at same time)

## Remote Control



When enter into youtube ,netflix etc video apps , you need switch to cursor module.

## WIFI

### Network settings

Wi-Fi Convenient hot spot Ethernet BT

- 1.Select Settings - Network Settings - WIFI, press the right button of the remote control or move the mouse to the OFF/ON button to turn off/on WIFI
2. After turning on WIFI, select the wireless network and enter the password to connect.

## Bluetooth

### Network settings

Wi-Fi Convenient hot spot Ethernet BT

- Select Settings - bluetooth, then turn one "BT", click "Projector"and press"OK" on device to rename the BT. Select"Available equipment"and choose available device to connect

## Portable Wi-Fi hotspot

### Network settings

Wi-Fi Convenient hot spot Ethernet BT

- 1.Select "Settings" -Convenient hot spot, click "OFF"turn on Easy WI-FI hotspot, then reset Network SSID, password,the way off security and AP band.Click "Save" to save the message.
- 2.Use smart phone to select this hotspot, and enter password to connect.

## Ethernet

There is no cable socket on projector, it needs external cable USB to connect (RJ45 interface needs IC drive RTL8152 or LAN9500 to support only).

## HDMI

The projector with HDMI input function is mainly used to input information of other device into the projector. Once you connect your laptop or gaming device, select HDMI.

## Connect with computer

Connect device with PC via USB cable, select "Setting". Click "USB" and there will be a word "On" after "USB", then it supports to copy files from PC to projector (Please note that this is not the function of mirroring screen.)

### { } Developer Options

Usb debugging **ON** **USB ON** USB computer connection

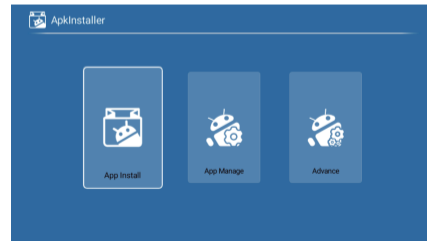
## Factory data reset

### Other settings

About this machine **Factory data reset** Local upgrade Storage  
Pointer speed Application Management Advanced Settings

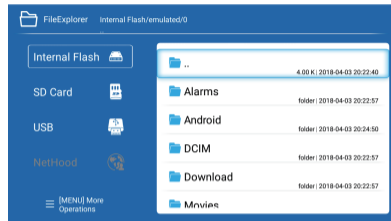
Select "Settings", click "Factory data reset", click "OK" then reset and delete all data.

## APK installation and unloading



1. select "APK Installer" in Smart Apps, select "APP Install". It supports to install APP from SD card, USB drive or APP store in device.
2. select "APK Installer" in Smart Apps, select "APP Manage", select any APP which needs to unload and then click "uninstall".

## USB driver, HDD, SD card and WORD,EXCEL,PPT



Inserting SD card, USB driver, please select "file explorer" in the App center, then you can find your file from your USB driver or SD card. (USB driver support max to 32 GB, HDD storage capacity max to 1TB)

## Built-in screen sharing function(Android)



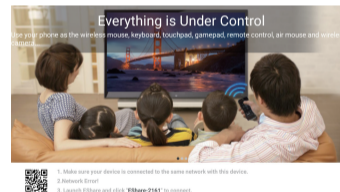
1. Android smart phone and projector should connect with same WIFI (if no network available, open the WIFI function, no need to connect with network).
2. Find screen sharing function in the settings, then open it.
3. Open projector, find wifi display or Miracast in Smart Apps.
4. Click "search", it will search for smartphone and click "agree" in the pop-up.

## EShare Instruction for Android

1. Install EShare App on Android Device

- ① Please make sure that Android device and projector are connecting with same network.
- ② Run " EShareServer" on projector side and operate according to the tips on the screen. Scanning QR code or visiting download website with Android smart phone, downloading and installing "EShare for Android".

- a. Connect your cellphone to network "same network connected to the projector"
- b. Visit "EShare download link" in explorer or scan QR code
- c. Open EShare, then click "Device name" .



## 2、 Connect Projector with Android Device

When EShare installation is finished, run "EShare" on smart phone side, then EShare will search for the projector which shares the same network with it automatically, click device list on the top to search again and check device. Click objective device name on the device list and the connection will be built. Projector will connect with device automatically when there is only one device available in EShare side.

## 3、 Wireless File Transfer

You can transfer selected files including music, video, pictures, office documents, PDF, e-book or APK from your Android devices to Projector by clicking "Storage".

## 4、 Wireless Control!

Click this icon in the EShare, then the smart phone can be used as the mouse, remote controller, keyboard or fly mouse of the projector .

## 5、 TV Mirror

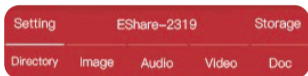
Click this icon in the EShare, you can transmit pictures from projector to smartphone in real-time.

## 6、 Mirroring

Click this icon on the smartphone, you can transmit the screen of Android device to projector screen.

## 7、 Camera

Click this icon in the EShare, pictures and sound of the smartphone camera can be transmitted to the projector in real-time.



Remote



TV Mirror




Mirroring

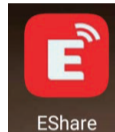


Camera

## EShare iPhone instruction

1. Slide  iPhone screen from bottom to top, click AirPlay mirror, then choose device in the list to achieve sharing screen with iPhone.

① Install EShare App on 10S Device (Open App Store on iPhone or iPad);  
② Search "EShare" and install " EShare for iPhone/iPad".



## 3、 Connect Projector with Android Device

① Connect your cellphone to network "same network connected to the projector"  
② Visit " Eshare download link" in explorer or scan QR code with cellphone to download and install the app .



1. Make sure your device is connected to the same network with this device.  
2. Network Error!  
3. Launch EShare and click "EShare-2161" to connect.



## EShare Instruction for Windows

### EShare Windows instruction

#### 1. Install EShare App on Windows Device

- ① Please make sure that Windows device and projector are connecting with same network.
- ② Run "EShare Server" on the projector and operate following the tips on the screen. Input download address in Explorer address bar, download and install "EShare for Windows".

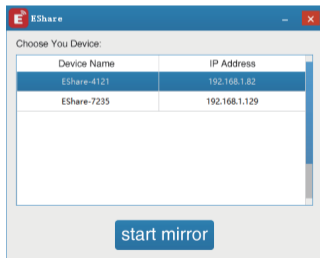
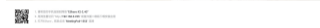
a. Connect your cellphone to network "same network connected to the projector"

b. Visit "EShare download link" in explorer or scan QR code with cellphone to download and install the app.

c. Open EShare, then click "Device name".

#### 2. Connect with Projector

Run "EShare" app, then EShare will search for the projector which share the same network with it automatically. When EShare find the device, click projector name on the device list to build the connection.



## iPhone line synchronization with the projector



Connect the projector with iOS or iPad data lines, point out "Trust This computer", choose "Trust", wait some seconds, phone screen will synchronize to projector.

## Upgrade online



hetackU1V20180403\_180925

current version

Check for updates

System Apps - All Apps - Wireless Upgrade - Operate according to the tips on the screen.

## Use U-disk/TF card to root

After projector is fully charged, rename the file from after-sale to "update\_sd.zip" and copy it to the root directory of U-disk or TF card. Insert U-disk or TF card to any USB port of projector, open projector then select setting- local upgrade . Click it to upgrade.

## PC upgrade instruction

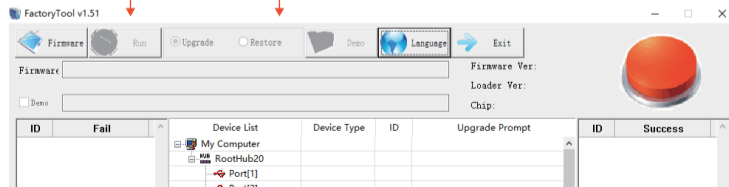
1. Please download the driver tool (<https://pan.baidu.com/s/1FbENObWwmTWfHb35XLozPA>), install the driver open driver setup file to install until finished (for win7 system, install with Administrator identity. For one PC, on the condition that tools and driver setup path keep unchanged, the driver installation only need once).
2. Prepare upgrade tool, firmware (the suffix should be .img), power adapter, machine that needs to be upgraded and corresponding USB cable.
3. Upgrade Preparation: Operate device in upgrade mode and connect with PC.
4. Operate device in upgrade mode
  - a. Connect with computer: use USB cable to connect machine USB upgrade port and PC.
  - b. Machine will enter root mode.
5. Our company will provide unzip the firmware and save as .img format. Open tool and click firmware, find the place of firmware for storage and load it.

1. Click firmware named with htc\_d005 to upload

2. Click Restore

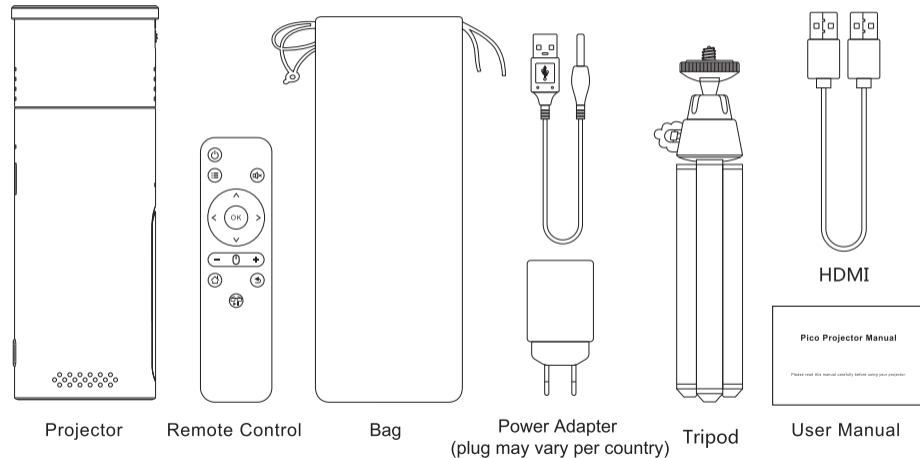
3. Click Demo to copy and upload firmware named with OEM\_d005

4. Click Demo



## Whats in the box

The box contents include a remote control, a bag, a Power Supply Unit (PSU), HDMI, user manual and the projector.



## Claim

The pictures, functions described in this user manual may be different from actual presetting of the machine, specific please in kind prevail. Our company is devoting to perfect product. performance and intensify product function, we reserve the right to modify product function and interface described in this manual without prior notice. Please in kind prevail. Please keep your device properly. The company is not responsible fo any loss caused by the wrong operation of software/hardware or repairing or any other reasons. The company also has no responsibility for any loss of any third-party. This manual has been carefully reviewed by professional engineer but there are inevitab some omissions. Thanks for your understanding.

Attention: when projector is working, please do not look directly into the lens, the strong light will flash your eyes and cause slight pain if your eyes are close to the lens. Children should use the projector under the supervision of adults.

## Warranty Card

Problems occurred:

Customer's Info.:

Name:

Telephone:

Address: